

CEILING SPEAKERS



PF-3B03T

CS-451T

CS-662T

CS-663T

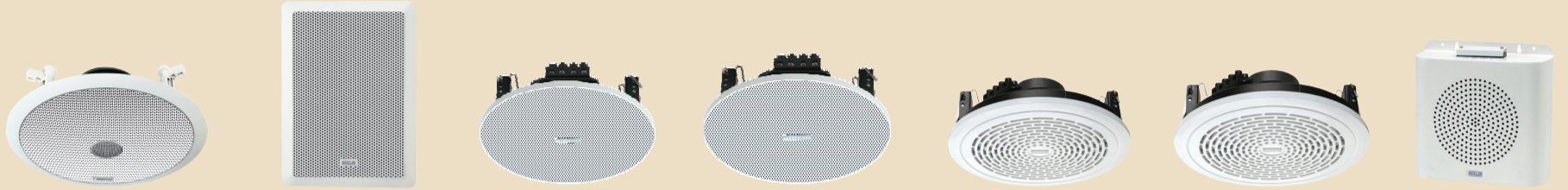
CS-5061T

CS-6081T

CS-8151T

CSD-6303T

INPUT POWER	6W RMS	4W RMS	6W RMS	6W RMS	6W RMS	8W RMS	15W RMS	30W RMS
POWER TAPS	6/3/1.5W on 100V	4/2/1W on 100V	6/3/1.5W on 100V	6/3/1.5W on 100V	6/3/1.5W on 100V	8/4/2W on 100V	15/10/5W on 100V	30/15/7.5W on 100V
FREQUENCY RESPONSE	70-15,000Hz	80-15,000Hz	60-15,000Hz	60-15,000Hz	60-15,000Hz	60-15,000Hz	55-16,000Hz	90-18,000Hz
SPL at 1kHz (1W/1m)	85dB	92dB	92dB	92dB	92dB	92dB	93dB	92dB
HOLE CUT OUT	Ø85 mm	Ø148 mm	Ø185 mm	Ø185 mm	Ø168 mm	Ø197 mm	Ø240 mm	Ø202 mm
DIMENSIONS	Ø105 × H80 mm	Ø160 × H68 mm	Ø230 × H75 mm	Ø209 × H79 mm	Ø200 × H85 mm	Ø227 × H77 mm	Ø270 × H98 mm	Ø230 × H120 mm
MATERIAL	Metal	ABS	ABS	ABS	ABS	ABS	ABS	ABS



CSD-8401T

WCS-6304T

CSX-5081T

CSX-6101T

CS-5044T

CS-6066T

BS-6083T

INPUT POWER	40W RMS	30W RMS	8W RMS	10W RMS	4W RMS	6W RMS	8W RMS
POWER TAPS	40/20/10W on 100V	30/15/7.5W on 100V	8/4/2W on 100V	10/5/2.5W on 100V	4/2/1W on 100V	6/3/1.5W on 100V	8/4/2W on 100V
FREQUENCY RESPONSE	90-18,000Hz	90-18,000Hz	80-15,000Hz	60-15,000Hz	80-15,000Hz	60-15,000Hz	60-15,000Hz
SPL at 1kHz (1W/1m)	93dB	93dB	92dB	92dB	92dB	92dB	92dB
HOLE CUT OUT	Ø242 mm	W187 × H272 mm	Ø143 mm	Ø181 mm	Ø143 mm	Ø181 mm	—
DIMENSIONS	Ø272 × H120 mm	W220 × H305 × D85 mm	Ø168 × H68 mm	Ø204 × H79 mm	Ø157 × H75 mm	Ø195 × H79 mm	W230 × H250 × D75 mm
MATERIAL	ABS	ABS	Metal	Metal	ABS	ABS	Metal

WALL SPEAKERS



PS-500T

PS-400T

PS-300T

SMX-902/902T

SMX-602/602T

SMX-302/302T

INPUT POWER	32W RMS/48W Max.	16W RMS/24W Max.	10W RMS/15W Max.	90W RMS	60W RMS	30W RMS
POWER TAPS	32/16/8W on 100V	16/8/4W on 100V	6/3/1.5W on 100V	90/60/30W on 100V	60/30/15W on 100V	30/15/7.5W on 100V
IMPEDANCE	8Ω	8Ω	8Ω	8Ω (SMX-902)	8Ω (SMX-602)	8Ω (SMX-302)
FREQUENCY RESPONSE	80-20,000Hz	85-20,000Hz	150-20,000Hz	55-20,000Hz	55-20,000Hz	80-20,000Hz
SPL at 1kHz (1W/1m)	87dB	86dB	86dB	90dB	88dB	86dB
DIMENSIONS	W178 × H252 × D144 mm	W133 × H187 × D107 mm	W95 × H141 × D100 mm	W280 × H380 × D220 mm	W230 × H300 × D200 mm	W165 × H225 × D150 mm
MATERIAL	ABS	ABS	ABS	HIP Plastic	HIP Plastic	HIP Plastic



WS-6255T

BS-6082T

WS-661T

WS-664T

WSX-551T

INPUT POWER	25W RMS	8W RMS	6W RMS	6W RMS	5W RMS
POWER TAPS	25/15/10/5W on 100V	8/4/2W on 100V	6/3/1.5W on 100V	6/3/1.5W on 100V	5/2.5/1.25W on 100V
FREQUENCY RESPONSE	120-15,000Hz	60-15,000Hz	60-15,000Hz	60-15,000Hz	80-15,000Hz
SPL at 1kHz (1W/1m)	94dB	92dB	92dB	92dB	92dB
DIMENSIONS	W262 × H262 × D128 mm	W230 × H230 × D75 mm	W262 × H262 × D128 mm	W262 × H262 × D128 mm	W179 × H195 × D101 mm
MATERIAL	ABS	Metal	ABS	ABS	ABS

COLUMN SPEAKERS



ASC-20T

ASC-40T

SCM-15

SCM-15T

SCM-30

SCM-30T

INPUT POWER	15W RMS/23W Max.	30W RMS/45W Max.	10W RMS/15W Max.	10W RMS/15W Max.	20W RMS/30W Max.	20W RMS/30W Max.
POWER TAPS	15/10/5/2.5W	30/20/10/5W	10 WATTS	10/7.5/5W	20 WATTS	20/15/10W
IMPEDANCE/VOLTAGE	100V	100V	8Ω	100V	16Ω	100V
FREQUENCY RESPONSE	150-15,000Hz	150-15,000Hz	150-15,000Hz	150-15,000Hz	150-15,000Hz	150-15,000Hz
SPL at 1kHz (1W/1m)	92dB	95dB	92dB	92dB	95dB	95dB
DIMENSIONS	W115 × H465 × D130 mm	W115 × H910 × D130 mm	W165 × H455 × D145 mm	W165 × H455 × D145 mm	W165 × H855 × D145 mm	W165 × H855 × D145 mm
MATERIAL	Aluminium	Aluminium	Metal	Metal	Metal	Metal



ASC-310T

ASC-315T

ASC-320T

LSC-8200

AT-40/AT-20/AT-06

INPUT POWER	10W RMS/15W Max.	15W RMS/23W Max.	20W RMS/30W Max.	INPUT POWER	200W RMS	RATED POWER	40W/20W/6W
POWER TAPS	10/7.5/5/2.5W	15/10/5/2.5W	20/15/10/5W	FREQUENCY RESPONSE	100-20,000Hz	INPUT VOLTAGE	100V
IMPEDANCE/VOLTAGE	100V	100V	100V	IMPEDANCE	8Ω	OUTPUT POSITION	11 selectable positions in AT-40 & AT-20; 5 selectable positions in AT-06
FREQUENCY RESPONSE	150-15,000Hz	150-15,000Hz	150-15,000Hz	SPL at 1kHz (1W/1m)	95dB	DIMENSIONS	W87 × H87 × D78 mm
SPL at 1kHz (1W/1m)	90dB	91.5dB	93dB	MATERIAL	Aluminium	MATERIAL	ABS
DIMENSIONS	W115 × H389 × D89 mm	W115 × H524 × D89 mm	W115 × H524 × D89 mm				
MATERIAL	Aluminium	Aluminium	Aluminium				

Speaker Volume Control



HORN SPEAKERS



UHC-15



UHC-15XT



UHC-25



UHC-25XT

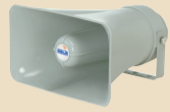


UHC-30



UHC-30XT

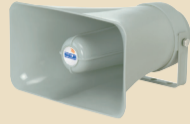
INPUT POWER	15W RMS/23W Max.	15W RMS/23W Max.	25W RMS/38W Max.	25W RMS/38W Max.	30W RMS/45W Max.	30W RMS/45W Max.
IMPEDANCE/POWER TAPS	8Ω	15/10/5/2.5W	8Ω	25/20/15/10/5W	8Ω	30/25/20/15/10/5W
FREQUENCY RESPONSE	275-7,000Hz	275-7,000Hz	250-10,000Hz	250-10,000Hz	240-10,000Hz	240-10,000Hz
SPL at 1kHz (1W/1m)	106dB	106dB	108dB	108dB	108dB	108dB
DIMENSIONS	Ø205 (L245) mm	Ø205 (L270) mm	Ø274 (L280) mm	Ø274 (L310) mm	Ø313 (L285) mm	Ø313 (L315) mm
MATERIAL	ABS (UV)	ABS (UV)	ABS (UV)	ABS (UV)	ABS (UV)	ABS (UV)



SUH-15



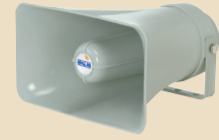
SUH-15XT



SUH-25



SUH-25XT



SUH-40



SUH-40XT

INPUT POWER	15W RMS/23W Max.	15W RMS/23W Max.	25W RMS/38W Max.	25W RMS/38W Max.	40W RMS/60W Max.	40W RMS/60W Max.
IMPEDANCE/POWER TAPS	8Ω	15/10/5/2.5W	8Ω	25/20/15/10/5W	16Ω	40/30/20/10/5W
FREQUENCY RESPONSE	275-7,000Hz	275-7,000Hz	250-10,000Hz	250-10,000Hz	180-7,000Hz	180-7,000Hz
SPL at 1kHz (1W/1m)	106dB	106dB	108dB	108dB	112.5dB	112.5dB
DIMENSIONS	250 × 145 (L265) mm	250 × 145 (L293) mm	315 × 165 (L290) mm	315 × 165 (L320) mm	400 × 200 (L385) mm	400 × 200 (L422) mm
MATERIAL	ABS (UV)	ABS (UV)	ABS (UV)	ABS (UV)	ABS (UV)	ABS (UV)

DRIVER UNITS / REFLEX HORNS



AU-35



AU-40°



AU-60°



AU-40°XT



AU-50XT



WFB



WFA

INPUT POWER	35W RMS/53W Max.	40W RMS/60W Max.	60W RMS/90W Max.	40W RMS/60W Max.	50W RMS/70W Max.	BELL DIA	18"	21"
IMPEDANCE/POWER TAPS	16Ω	16Ω	16Ω	40/30/20/10W	50/40/20/10/5W	CUT-OFF FREQ.	190Hz	160Hz
FREQUENCY RESPONSE	160-7,000Hz	160-7,000Hz	160-7,000Hz	160-7,000Hz	160-7,000Hz	MATERIAL	Aluminium	Aluminium
SPL at 1kHz (1W/1m)	112dB	112.5dB	113.5dB	112.5dB	113dB			
DIMENSIONS	Ø113 × H89 mm	Ø113 × H98 mm	Ø125 × H100 mm	Ø150 × H137 mm	Ø150 × H143 mm			
MATERIAL	Die-cast Aluminium, Nylon	Die-cast Aluminium, Nylon	Die-cast Aluminium, Nylon	Die-cast Aluminium, Nylon	Die-cast Aluminium, Nylon			

SPECIAL PURPOSE SPEAKERS

PA Sound Projector

PA Dual Sound Projector

Garden Speaker

Line Array Speaker

Fashion Speaker



SP-5251T



SP-6305TD



GS-6401T



ALA-2400



LCS-404T

INPUT POWER	25W RMS	30W RMS	40W RMS	200W RMS	40W RMS
POWER TAPS	25/20/15/10/5W on 100V	30/20/10/5W on 100V	40/20/10/5W on 100V	8Ω	40/20/10/5W on 100V
FREQUENCY RESPONSE	120-15,000Hz	120-15,000Hz	160-16,000Hz	70-20,000Hz (60° mode)	90-20,000Hz
SPL at 1kHz (1W/1m)	93dB	94dB	88dB	96dB	90dB
DIMENSIONS	Ø183 × H215 mm	Ø175 × H256 mm	Ø185 × H765 mm	W408 × H546 × D342 mm	W350 × H135 × D260 mm
MATERIAL	ABS	ABS	Die-cast Aluminium	Polystyrene Plastic	ABS

MUSIC HORN SPEAKER



AMH-402T

INPUT POWER	40W RMS
POWER TAPS	40/20/10/5W on 100V
FREQUENCY RESPONSE	120-16,000Hz
SPL at 1kHz	98dB/1W/1m; 114dB/40W/1m
DIMENSIONS	W370 × H255 × D300mm
MATERIAL	ABS (UV)

MOULDED CABINET SPEAKER SYSTEMS



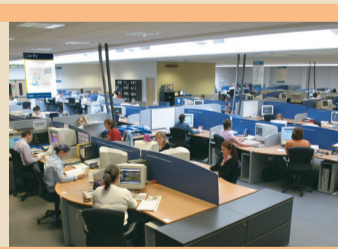
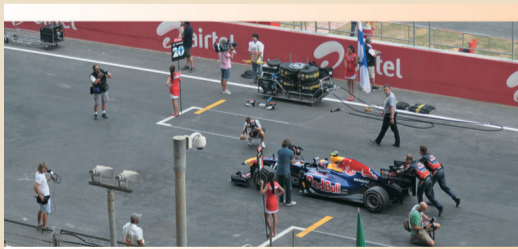
VS-300

INPUT POWER	300W RMS
FREQUENCY RESPONSE	55-18,000Hz
NOMINAL IMPEDANCE	8Ω
SPL at 1kHz (1W/1m)	97dB
DIMENSIONS	W410 × H628 × D335 mm
MATERIAL	Polystyrene Plastic



VS-200

INPUT POWER	200W RMS
FREQUENCY RESPONSE	65-18,000Hz
NOMINAL IMPEDANCE	8Ω
SPL at 1kHz (1W/1m)	94dB
DIMENSIONS	W356 × H530 × D326 mm
MATERIAL	Polystyrene Plastic



Design and Specifications are subject to change without notice owing to continuous product up-gradation. Technical specifications are subject to production tolerances. We cannot be held responsible for printing errors, should they occur. AHUJA is a registered trademark of Ahuja Radios in India and other countries. © Copyright Ahuja Radios, 2015. All rights reserved. Any unauthorized reproduction or use of logos, images or design elements is strictly prohibited by law. No part of the compilation may be reproduced in any manner or translated without written permission.

AHUJA RADIOS

215, Okhla Industrial Estate, New Delhi-110 020, India
 Tel: +91-11-26831549/41612474 Fax: +91-11-26847287/41616563
 E-mail: marketing@ahujaradios.com

For Enquiries (within India): marketing@ahujaradios.com
 For International Enquiries (from outside India): intl.trade@ahujaradios.com

AHUJA RADIOS, C-45, Phase-II, Noida-201305 (UP),
 TRUSOUND PVT. LTD., C-89, Sector IV, Noida-201301 (UP)

www.ahujaradios.com

AHUJA[®]
 Hallmark of Reliability!



For further details, please contact: